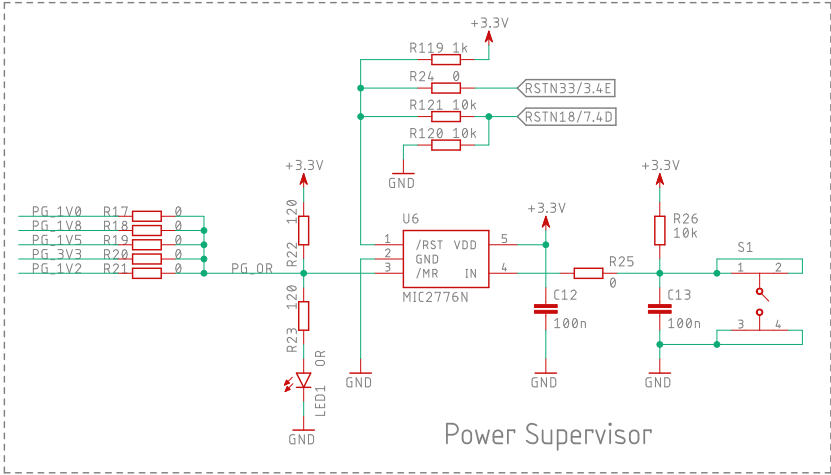
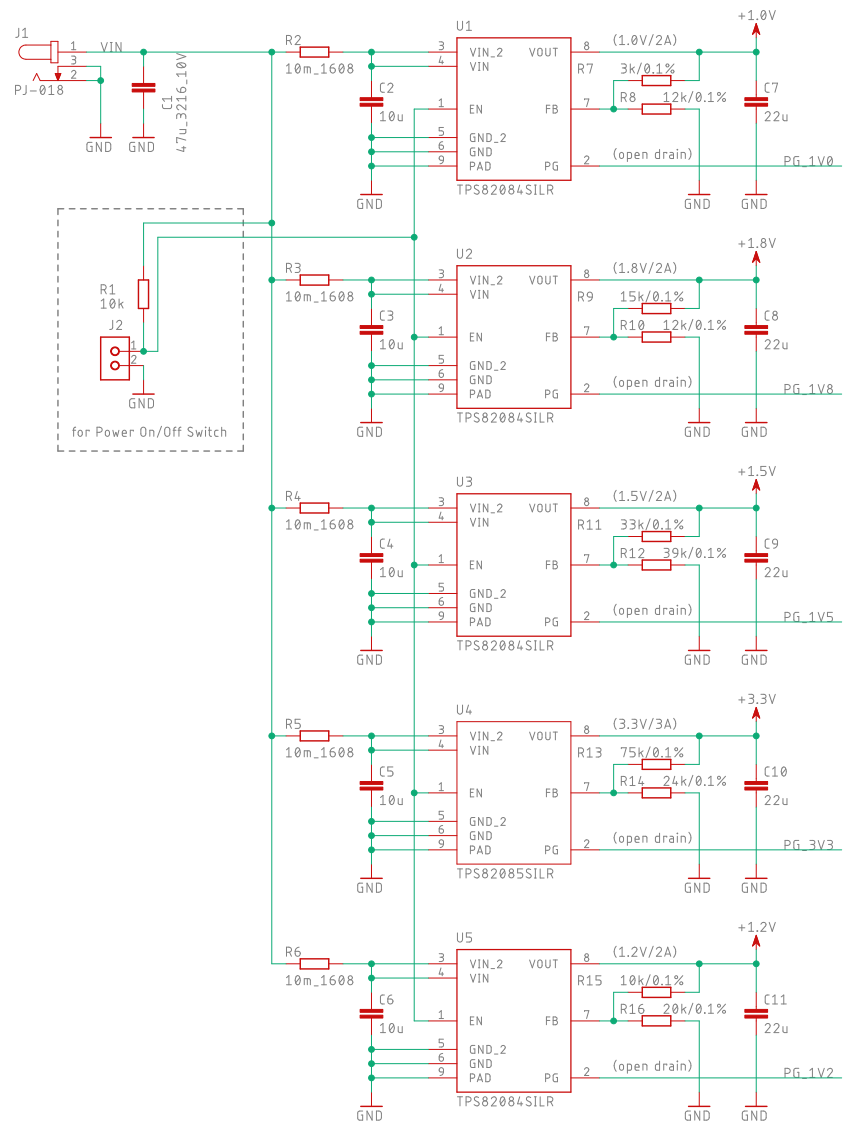


Power Circuitry



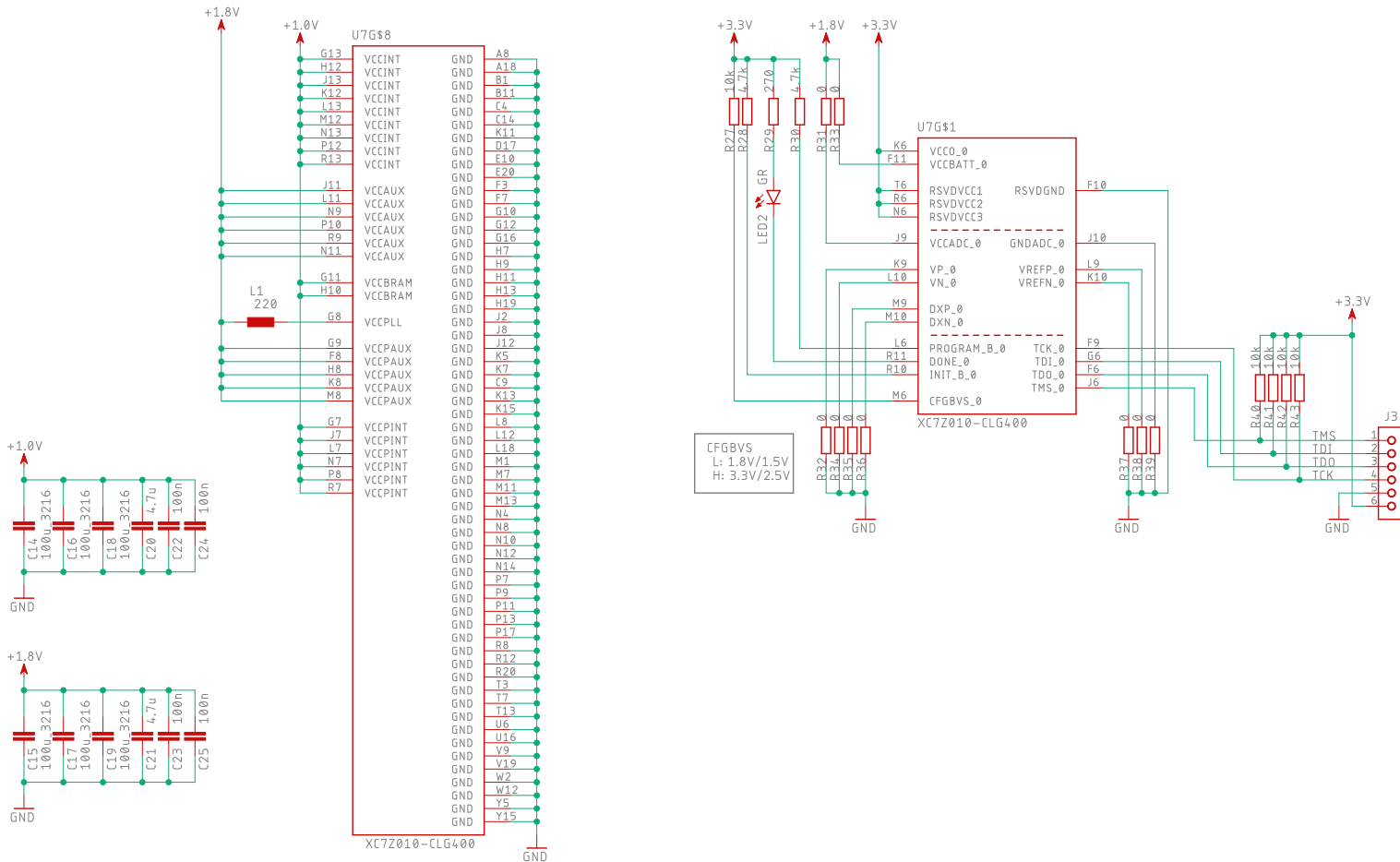
Fiducial Marks



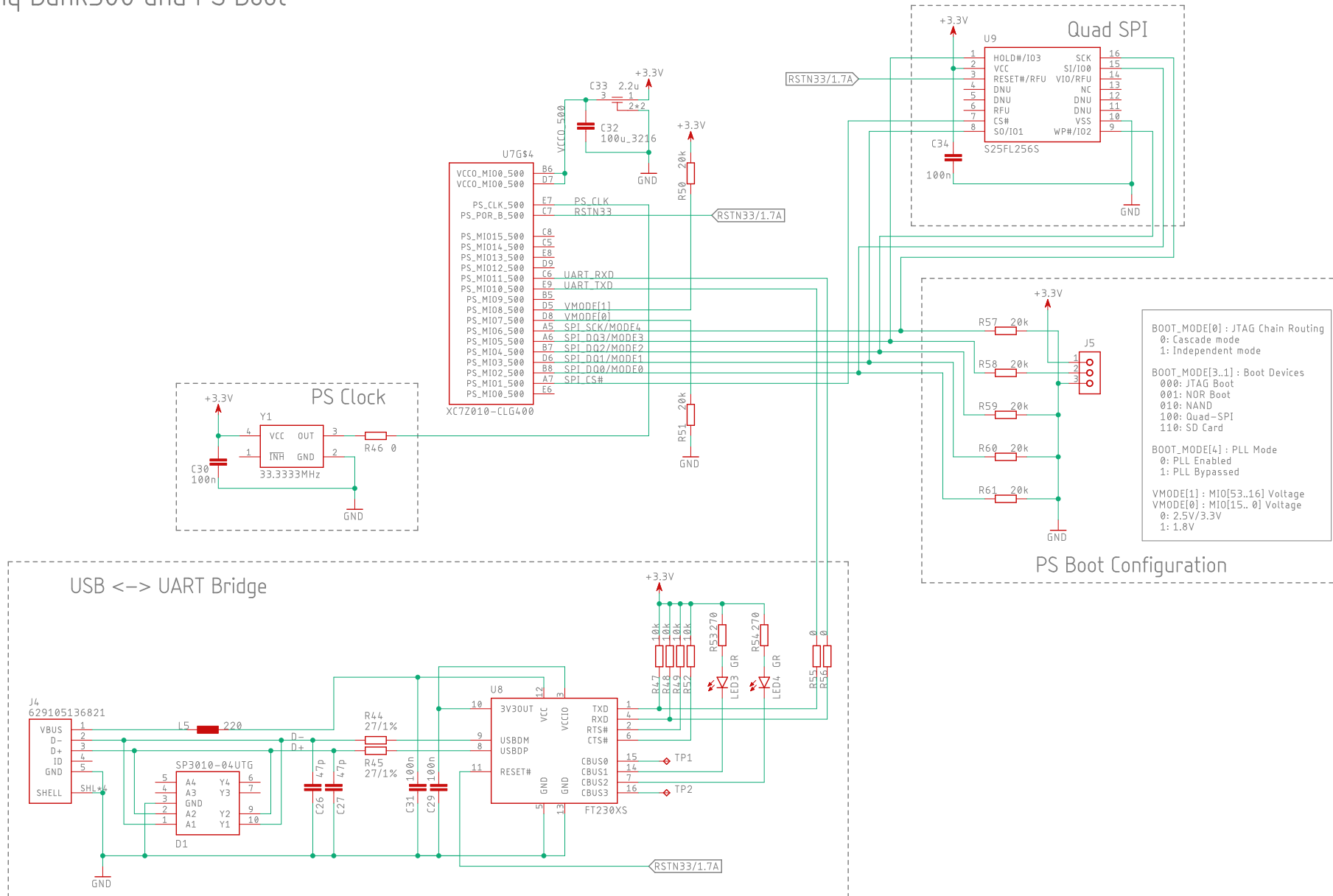
Ground Check Pin

Power Circuitry	SVM-Z10	
	Nu-Gate Technology	
	2020/03/16 10:42	
	Sheet: 1/7	1.0

Zyng Power and PL Configuration



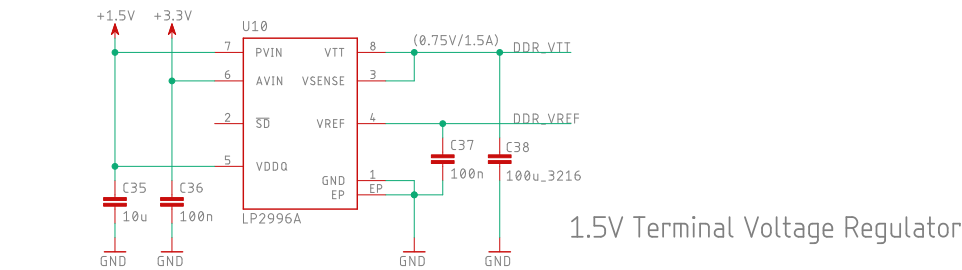
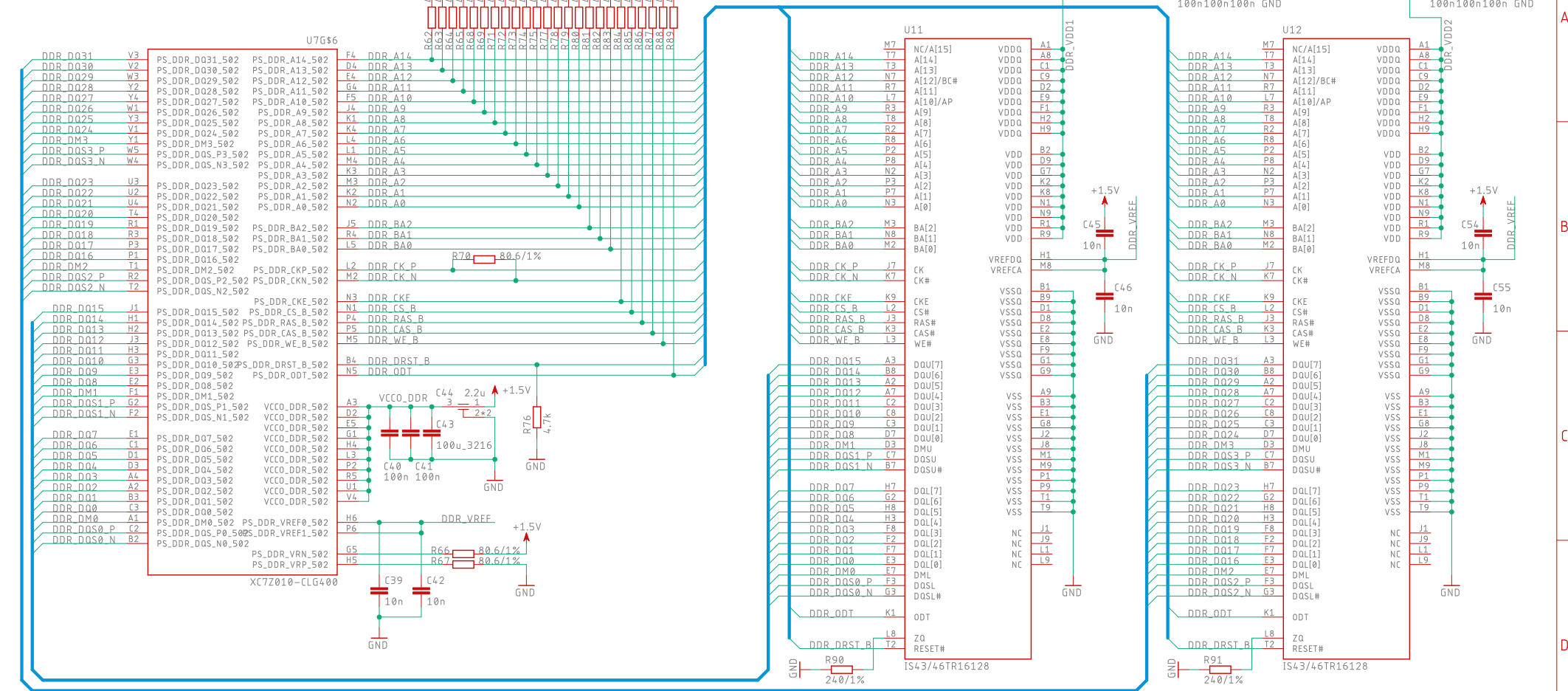
Zynq Bank500 and PS Boot



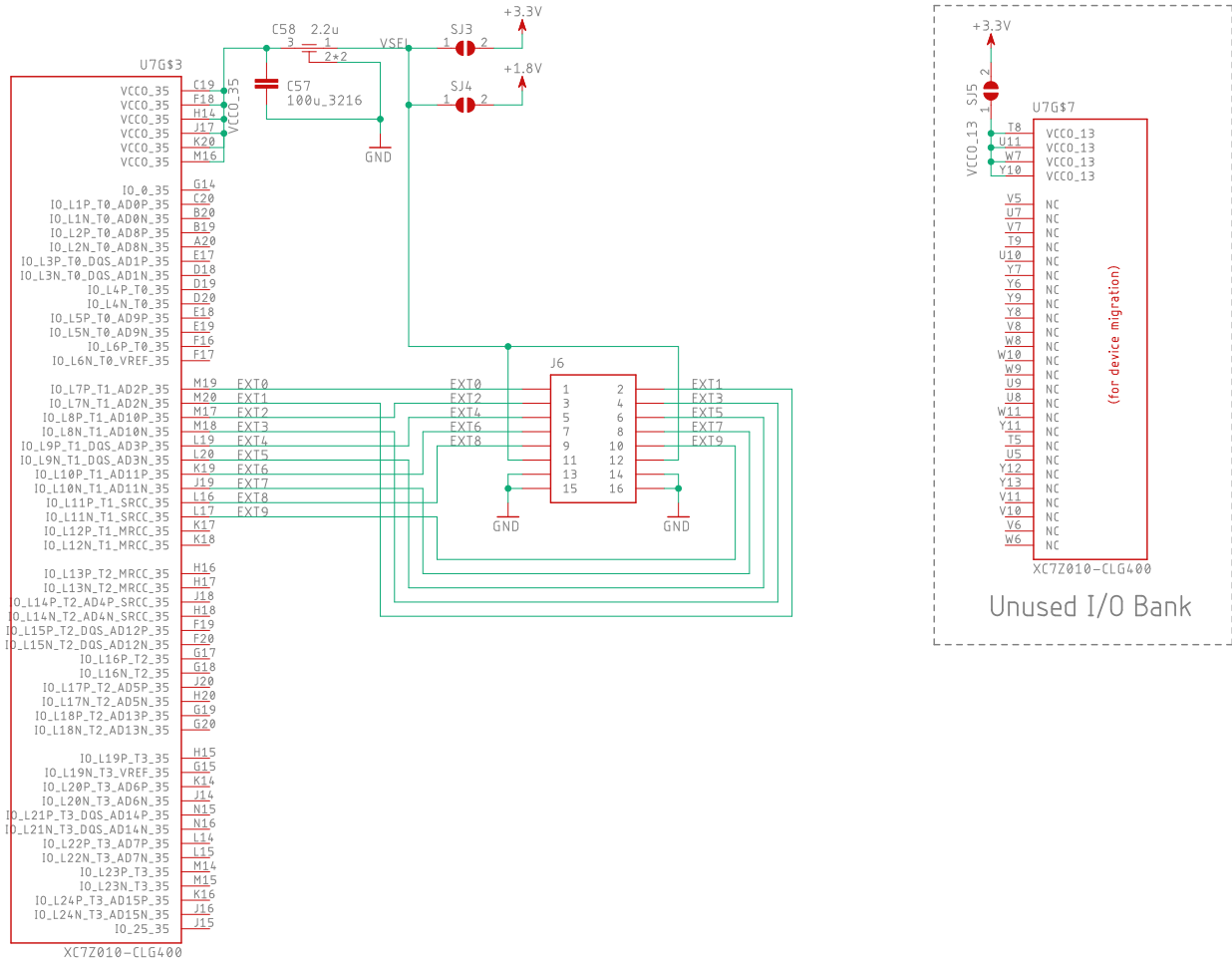
Zynq Bank500 and PS Boot

SVM-Z10
Nu-Gate Technology
2020/03/16 10:42
Sheet: 3/7 1.0

Zynq Bank502 and DDR3

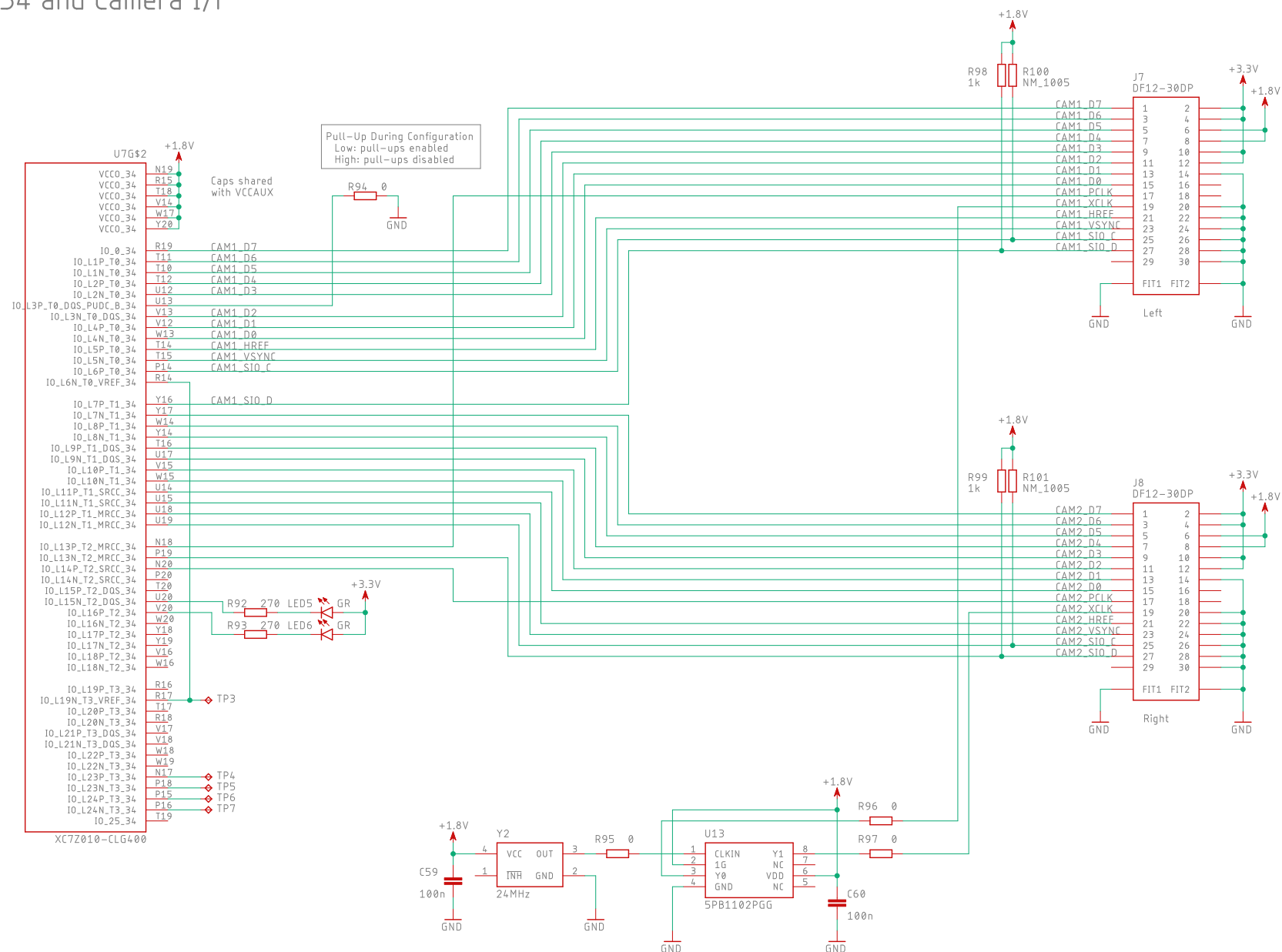


Zyng Bank35 and Extension Port



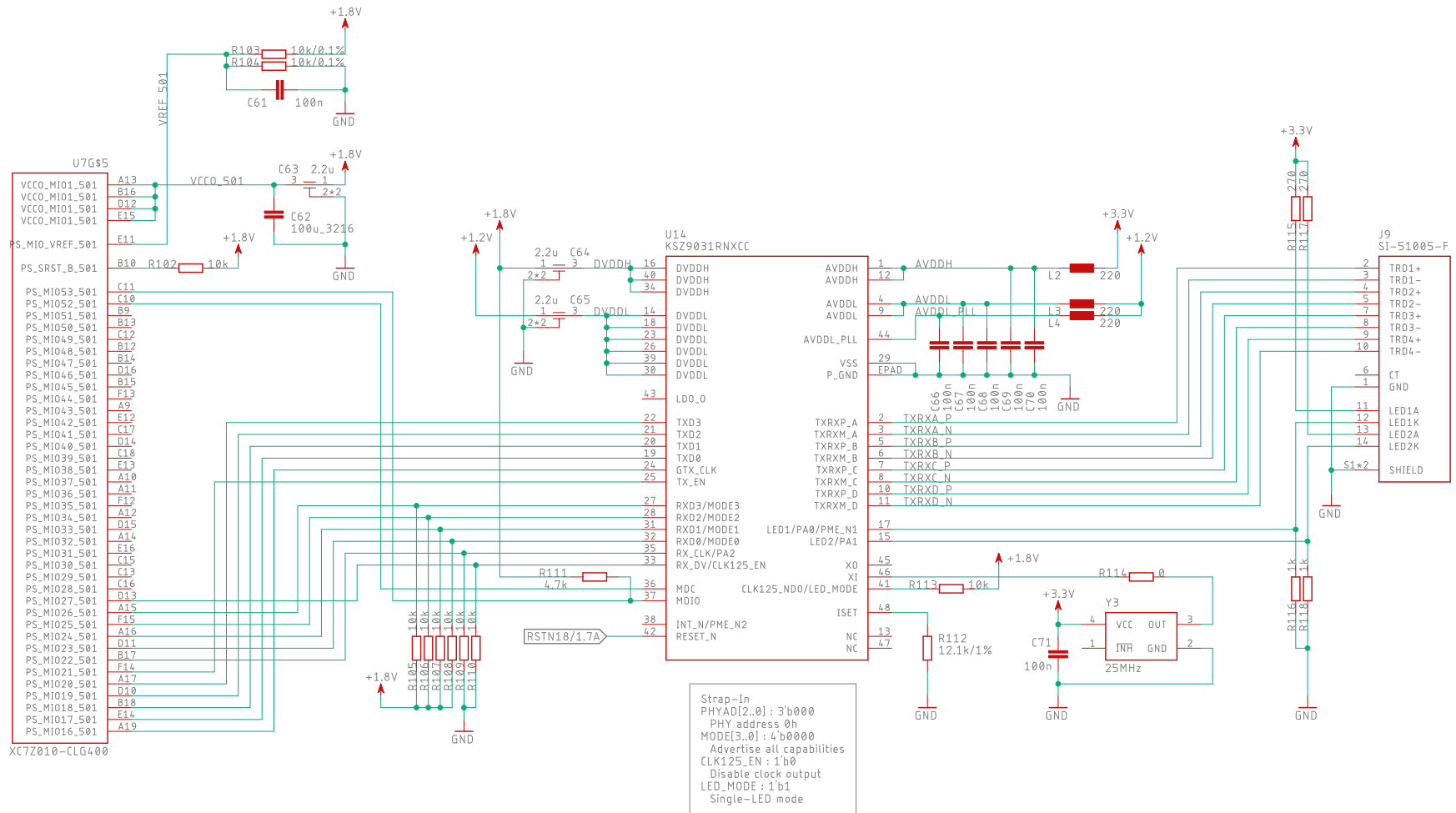
Zynq Bank35 and Ext Port	SVM-Z10	
	Nu-Gate Technology	
	2020/03/16 10:42	
	Sheet: 5/7	1.0

Zynq Bank34 and Camera I/F



Zynq Bank34 and Camera I/F		SVM-Z10	
		Nu-Gate Technology	
		2020/03/16 10:42	
Sheet: 6/7		1.0	

Zynq Bank501 and Gigabit Ethernet



Zynq Bank 501 and GbE

SVM-Z10
Nu-Gate Technology
2020/03/16 10:42
Sheet: 7/7 1.0