

# MONITOR YOUR CARBIKE OR ANY VEHICLES ON YOUR DESKTOP

WE CAN USE WEMOS D1 AND NEO-6M GPS MODULE.



FEATURES

PRICING

FAQ

SUPPORT

BLOG

TUTORIAL

API DOCS

LOGIN

REGISTER

# Best IoT Platform for Raspberry Pi, NodeMCU and ESP8266 Projects

Create Stunning Dashboards and Vizualizations for your IoT Projects

Get Started

Watch Demo


Join Our Referral Program



Invite





 Continue with Google

or

SIGNUP TO GET INSTANT ACCESS.

Name

Enter Name

Email address

Enter email



Password



Retype Password



Contact Number\*

Enter Mobile Number



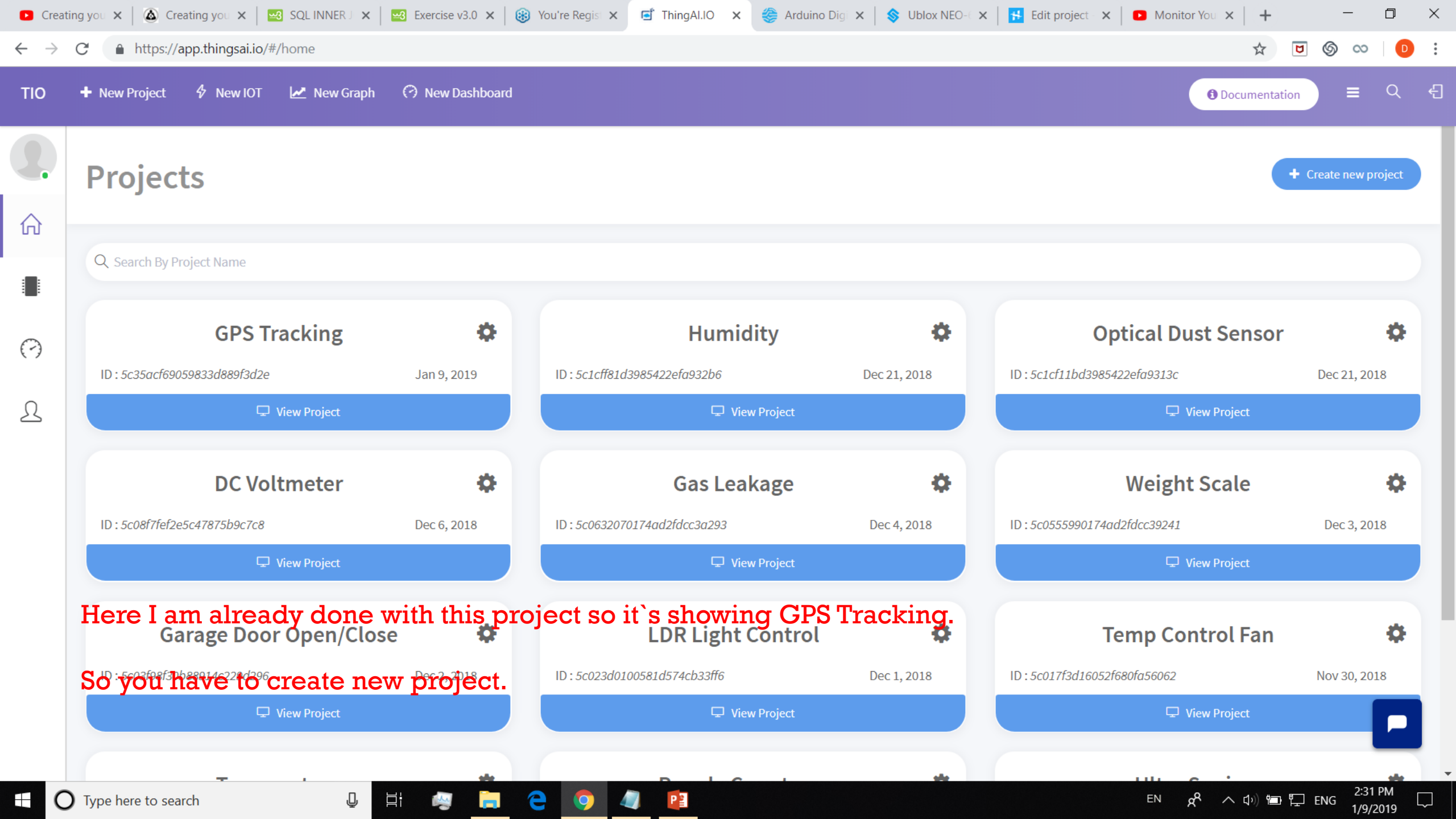
I'm not a robot



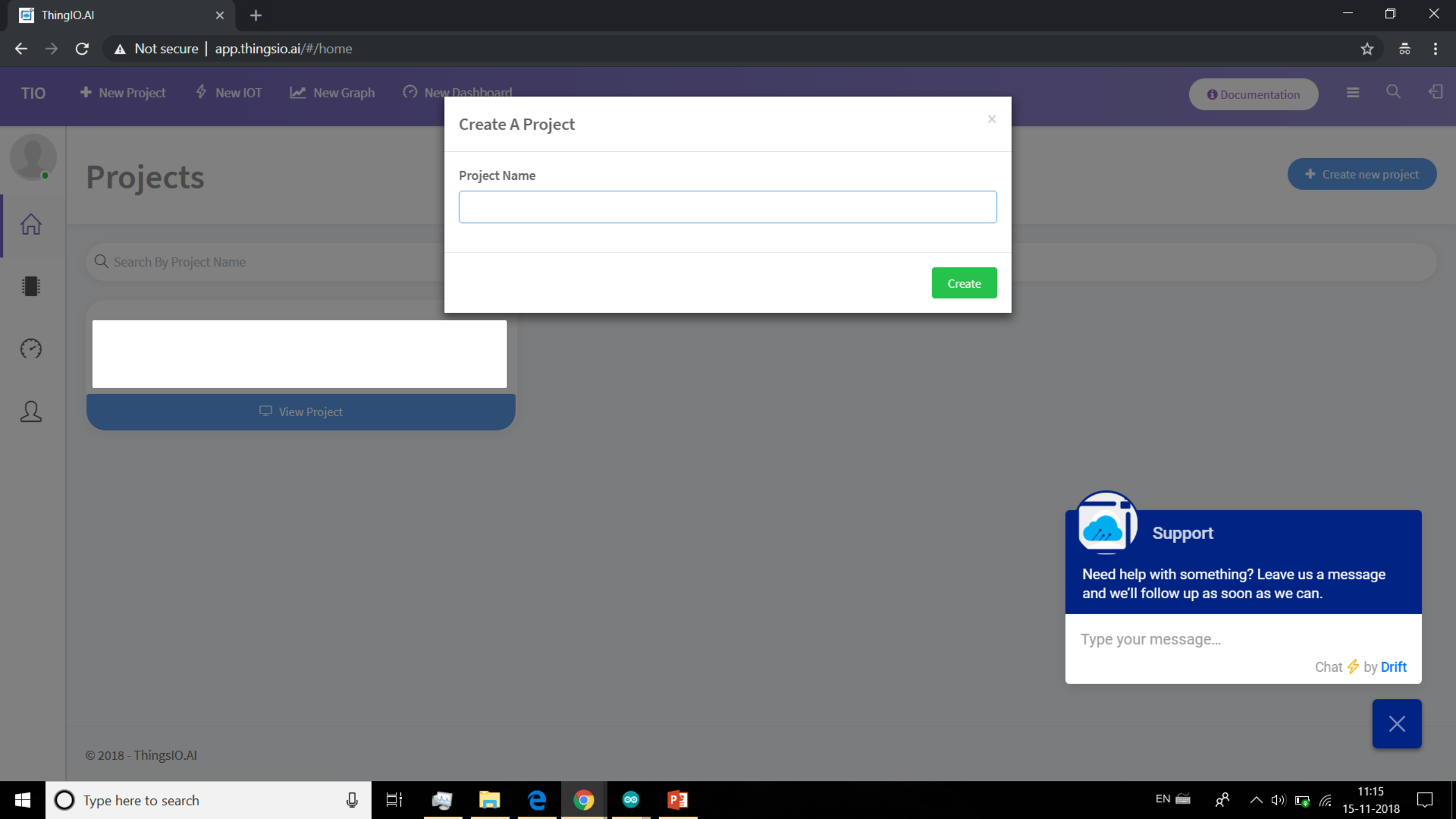
reCAPTCHA  
Privacy - Terms

I am continue with Google account

Then as your wish... 😊



Here I am already done with this project so it's showing GPS Tracking.  
So you have to create new project.



## Create A Project x

Project Name

Create

+ Create new project

## Projects

🔍 Search By Project Name

🖨 View Project



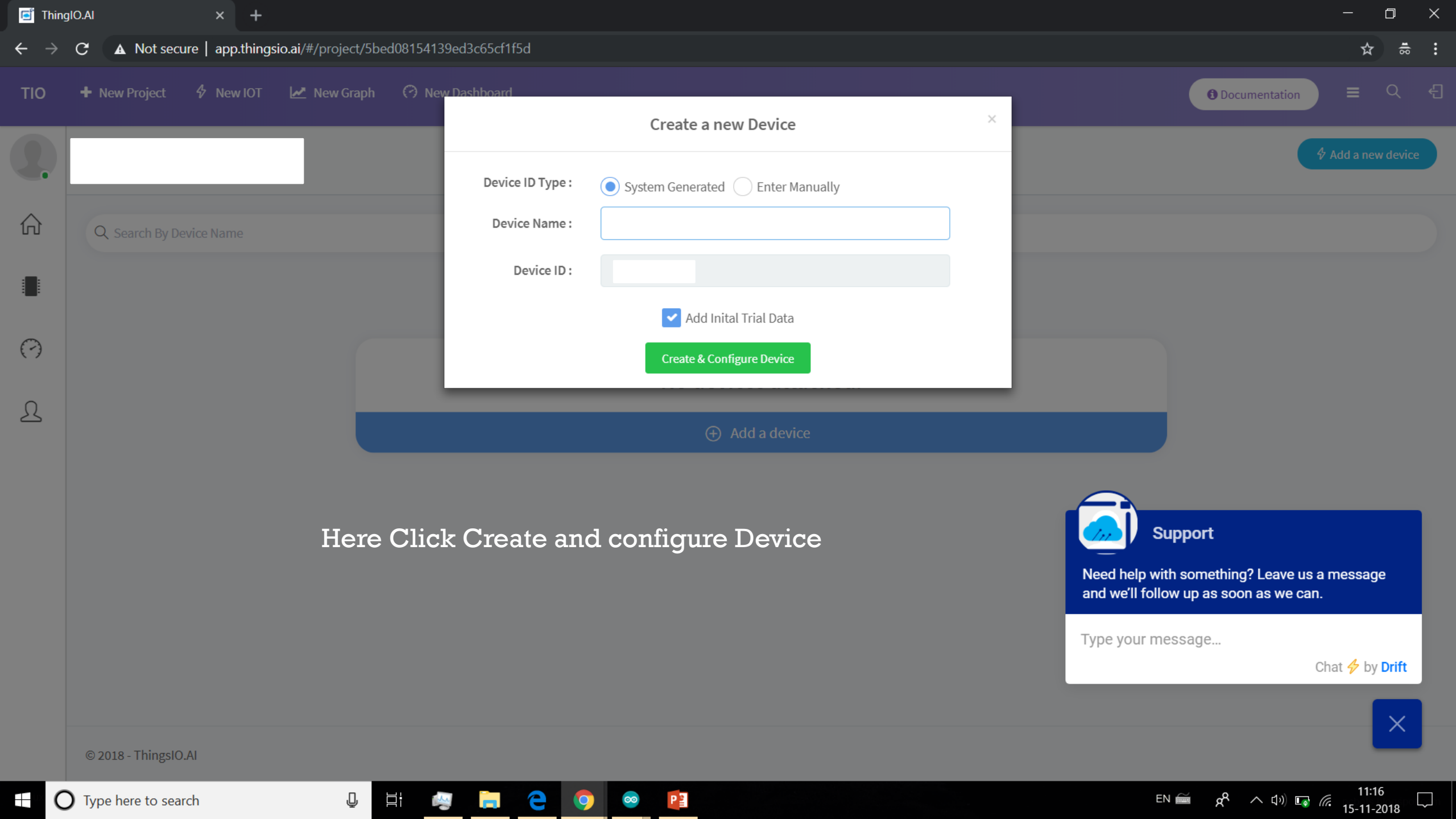
## Support

Need help with something? Leave us a message  
and we'll follow up as soon as we can.

Type your message...

Chat ⚡ by Drift





### Create a new Device

Device ID Type : ☒ System Generated ☐ Enter Manually

Device Name :

Device ID :

☒ Add Initial Trial Data

Create & Configure Device

Here Click Create and configure Device



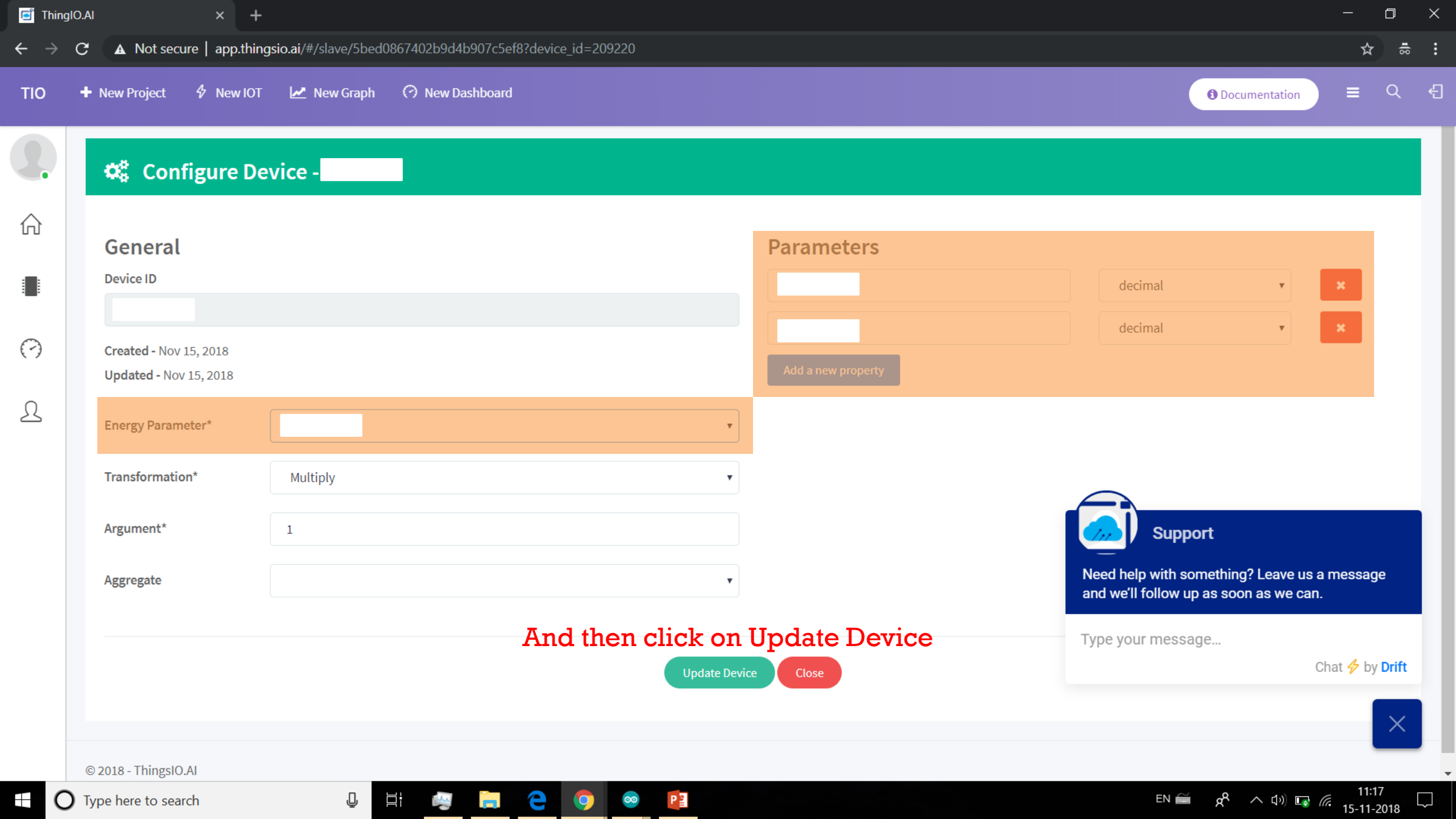
Support

Need help with something? Leave us a message and we'll follow up as soon as we can.

Type your message...

Chat ⚡ by Drift





## Configure Device - [redacted]

### General

Device ID

Created - Nov 15, 2018

Updated - Nov 15, 2018

Energy Parameter\*

Transformation\*

Multiply

Argument\*

1

Aggregate

### Parameters

decimal

decimal

Add a new property

And then click on Update Device

Update Device

Close

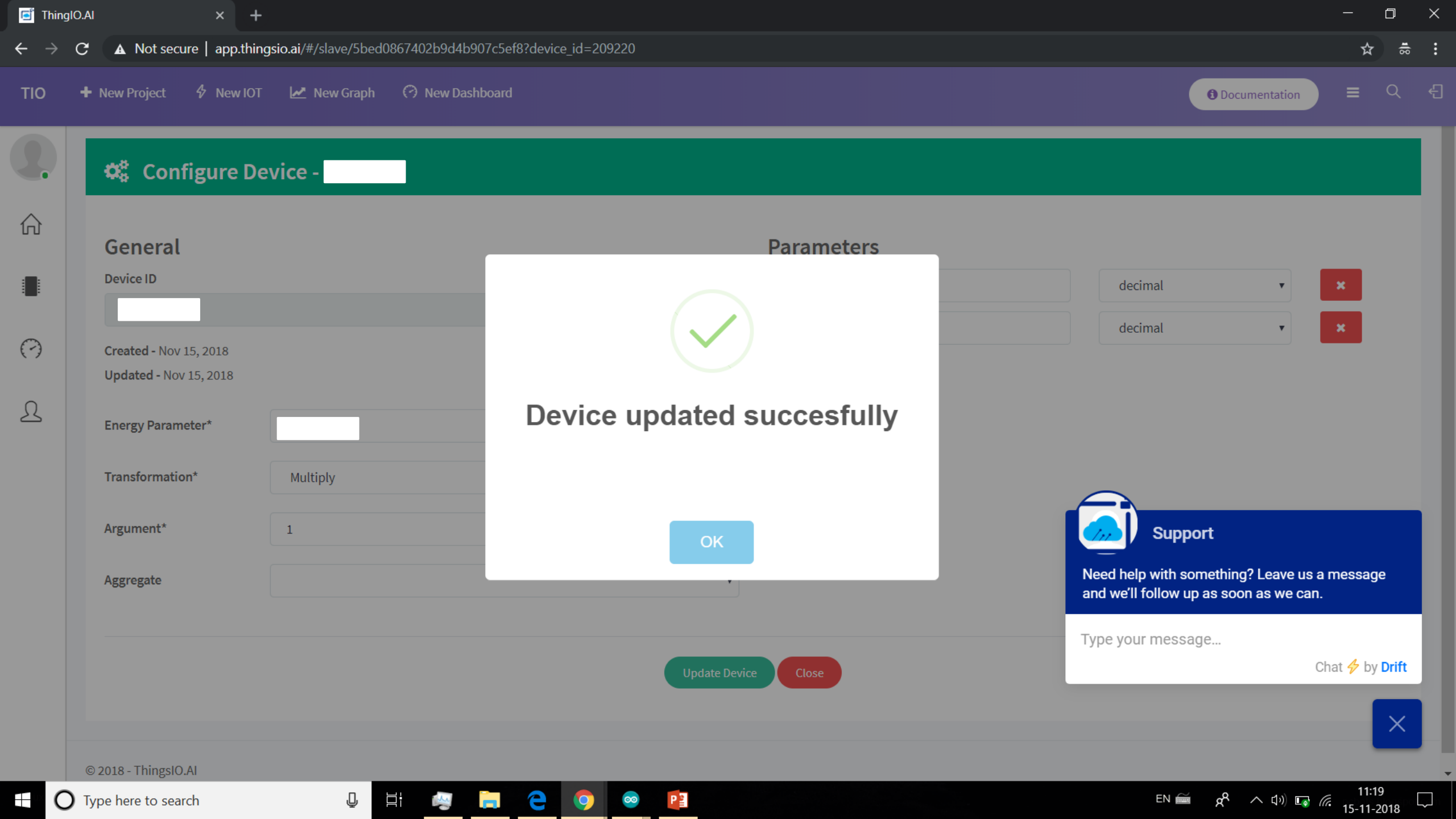


Support

Need help with something? Leave us a message and we'll follow up as soon as we can.

Type your message...

Chat ⚡ by Drift





Creating you xCreating you xSQL INNER J xExercise v3.0 xYou're Regist xThingAI.IO xArduino Dig xUblox NEO-xEdit project xMonitor You x

https://app.thingsai.io/#/device/all-devices/61121695805

☆🔍🔄🔗🔴D⋮

TIO+ New Project⚡ New IOT📈 New Graph🔄 New DashboardDocumentation🔍🔗

Quick AnalysisSample CodesCreate GraphConfigure Device

Dat0Units

Code is in description below.

And also set your wifi credential.

And upload that code in your wemos d1.

Data PointJan 9, 2019, 2:00:26 PM

28.545799latitude

77.170303longitude

Last 5 dataRefresh

1	Slave ID - 1	Jan 9, 2019, 2:00:26 PM
2	Slave ID - 1	Jan 9, 2019, 2:00:26 PM
3	Slave ID - 1	Jan 9, 2019, 2:00:15 PM
4	Slave ID - 1	Jan 9, 2019, 2:00:04 PM

Device Graphs

Here fake value.  
You can see update in video.

No Graphs CreatedCreate Graph

💬

Type here to search🔍

📄📁📧🌐🔍📄📅

EN👤🔊🔌🔌ENG2:32 PM1/9/2019🗨